

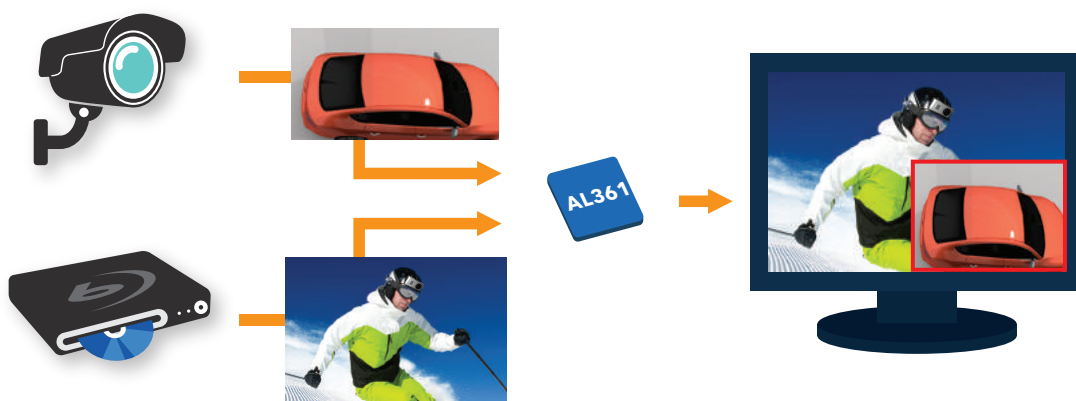
UHD 4K2K Dual-channel Video Processor

AverLogic's AL361 is a multi-AV stream System-on-a-Chip (SoC) keen on providing seamless implementation for UHD 4K2K Video Product Developers.

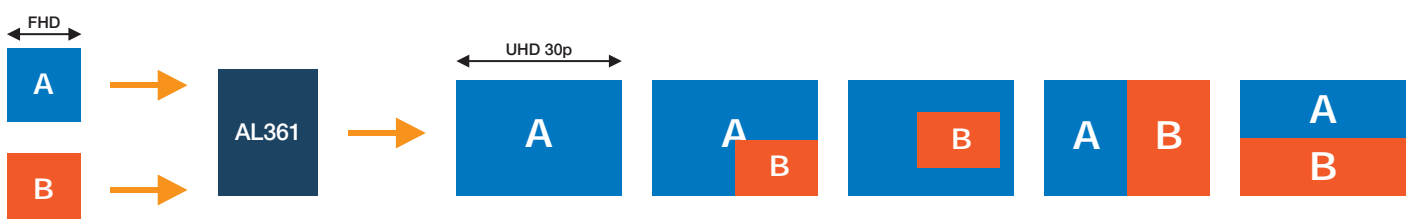
AL361 is designed for multi-purpose applications that require high-performance digital image processing, small size and low power, therefore, it is an ideal choice for decision makers looking to develop optimal solutions at a low cost and in a quick time to market.

Features

- **Highly integrated single chip**
Embedded 8051 MCU, low power DDR, flash and video processing engine with small-size package LFBGA-249 12x12 mm.
- **Varietal video input/output interfaces**
Dual-channel video processing engine with SD, HD digital video combinations, such as 24-bit RGB, 16-bit YC and 8-bit YC inputs and outputs.
- **Video Processing**
Configurable flexi-port supports de-interlacing, cropping, scaling, OSD, format conversion, PIP and POP for 4K2K display.

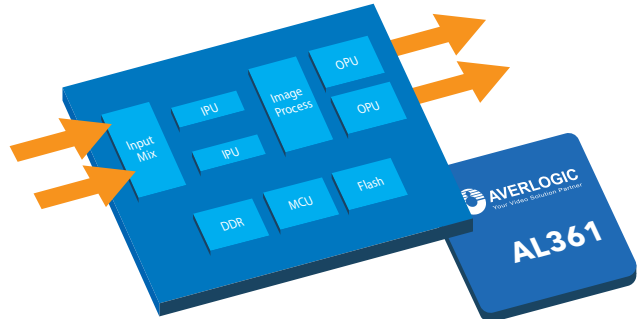


Display Modes



Applications

- HD Video format converter
- Multiple sources and format processing for PiP, PoP, video view, rotation, scaling conversion chip up to 4K2K resolution
- Dual ports input for high-end to low cost video conversion and manipulation applications



Specifications

- **Video Input**
 - 24-bit RGB/YUV (444)
 - Dual 16-bit BT.1120 (422)
 - Dual 8-bit BT.656 D1
 - Supports 24-bit RGB/YUV (444) image input for OSD bitmap overlay
 - Supports data clock rate up to 150Mhz or DDR (Double Data Rate) sample at rising and falling edges
- **Video Output**
 - Dual 24-bit RGB/YUV (444)
 - Dual 16-bit BT.1120 (422)
 - Supports data clock rate up to 150Mhz and 300Mhz for 4K2K output
- **Video Processing and Scaling**
 - Supports window composition/ overlaying , PIP-window, POP-window, and flexible scale up/down for up-to-date display technology design, such as 4K2K application
 - Video scaling engine (scale up/down) up to 1080 60p or doubling 1080p to 4K2K 30p
 - Video processing engine supports varieties of video manipulating operations, such as de-interlacing, time base conversion, cropping, rotation, mirroring, Image freeze
- **OSD**
 - Supports character (font), Icon-base and 2-layer 8-bit Bitmap OSD overlay
 - Supports 24-bit bitmap OSD direct download via video input port
- **MCU & Flash Interfaces**
 - Supports embedded 8051 MCU
 - Embedded Serial flash memory provides storage for boot up program. External SPI download is possible
- **Miscellaneous**
 - 1.8V core logic & 1.8V - 3.3V I/O
 - Embedded Low Power DDR-SDRAM and 8051MCU
 - Small-size package LFBGA-249 12x12 mm

Contact Details
